

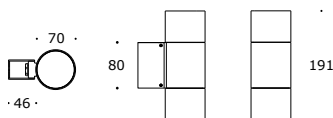
BUTALO



BUTALO is a family of cylinder shaped luminaires for wall and ceiling mounting. Wall version - down and up/down. Flush tempered glass against accumulation of dirt. 230V/GU10 sockets suitable for LED retrofits.



BUTALO UD



reference	31102
wattage	max 2x35 W
IP65	lamp
230V	base
	GU10